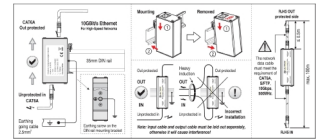




# ELIT DP-POE-CAT6A



## Surge Protector DataPro PoE CAT6a

### Technical description

Surge protection for information technology and telecommunications installations

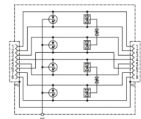
Up to 10 GBit/s high-speed network protector with 35 mm DIN rail.  
 Applications: DataPro 10G EA 4PPOE CAT6a is designed for use in office and industrial networks such as 10 Gigabit Ethernet (10GBASE-T), ATM and ISDN systems.  
 It can also be used to protect VoIP systems, industrial Ethernet networks, PoE applications, IP camera systems, and similar installations.

#### Installation instructions

1. This product is connected in series with the protected device.
2. Mount the SPD unit on a 35 mm DIN rail.
3. The "OUT" terminal should be connected to the protected devices, and the "IN" terminal should be connected to the source.
4. The grounding terminal of the PD must be connected to a nearby grounding rail or the metal grounding cabinet of the protected device.
5. After the above, ensure that the circuit is functioning.

### Advantages:

For protection of data transmission systems for computers, network systems, and so on  
 Ideal for protecting Ethernet applications up to 10 GBit/s  
 Good discharge capacity, low voltage protection level  
 Fast response, high transfer speed, low signal attenuation  
 Metal housing design with RJ45 connectors, easy to install  
 Optional DIN rail installation  
 Increased protection against moisture and vibrations through silicone encapsulation of the components



Product name/ Art.nr/ GTIN	ELIT DP-POE-CAT6A/ 21170006/ 7070810041060
According to:	EC 61643-21; EN 61643-21; GBIT 18802.21.
Nominal voltage AC	0 - 0 Volt
Nominal voltage DC	3,3 - 3,3 Volt
Max. continuous voltage DC	3,3 Volt
Lightning impulse current (10/350 µs)	0,5 kiloampere
Nominal discharge surge current (8/20)	2,5 kiloampere
Nominal load current	1,5 Ampere
Voltage protection level	100 Volt
Voltage protection level core/core	100 Volt
Voltage protection level core/earth	600 Volt
Voltage protection level core/signal ground	500 Volt
Frequency	0 - 500 Megahertz
Limiting frequency	500 Megahertz
Mounting method	DIN rail (top hat rail) 35 mm
Connection 1	RJ45
Pro-active thermo-control	No
With remote signalling contact	No
Explosion-tested version	No
Signal disconnection	No
Number of conductors (without earthing)	8
Earthing via	Other
Degree of protection (IP)	IP20